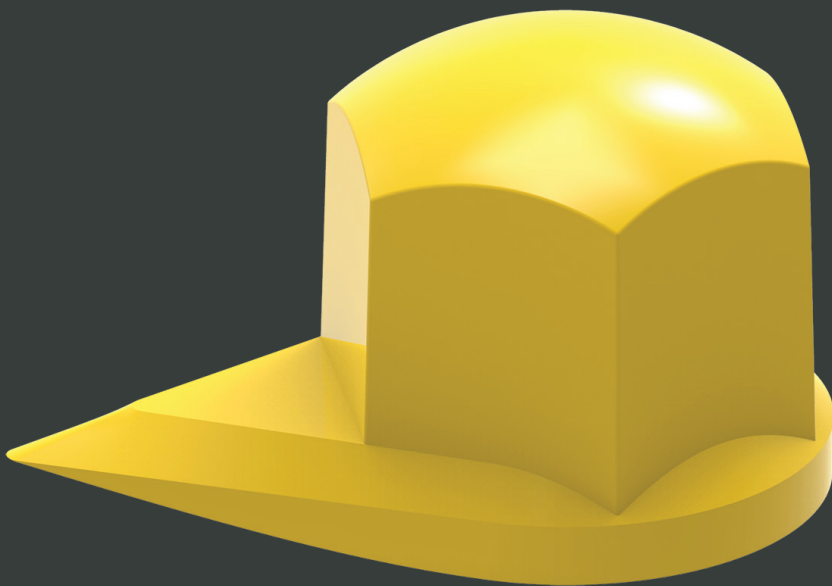


# Dustite®

Dustite® is a loose wheel nut indicator and protective cap, which also provides wheel overheating indication.



AVAILABLE

| Colour        | Size (mm) |
|---------------|-----------|
| Fluoro Yellow | 17        |
|               | 18        |
| Red           | 19        |
|               | 20        |
| Solid Yellow  | 21        |
|               | 22        |
| Green         | 23        |
|               | 24        |
| Orange        | 25        |
|               | 26        |
| Blue          | 27        |
|               | 28        |
| Olive Grey    | 29        |
|               | 30        |
| Black         | 31        |
|               | 32        |
| Silver Grey   | 33        |
|               | 34        |
| White         | 35        |
|               | 36        |
| White         | 37        |
|               | 38        |
| White         | 39        |
|               | 40        |
| White         | 41        |
|               | 42        |
| White         | 43        |
|               | 44        |
| White         | 45        |
|               | 46        |
| White         | 47        |
|               | 48        |
| White         | 49        |
|               | 50        |

# Dustite®

**Product:** Dustite® Yellow 33mm  
**Product Code:** DTY33

**Function:** The Dustite® combines a loose wheel nut indicator and a protective cap, to indicate movement of the wheel nuts and to protect them from external elements such as water, dirt, road salts and rust. The Dustite® will also melt to indicate any overheating issues.

**Material:** We use high-grade virgin polymer to ensure product quality and reliability as an overheating indicator.

**Melt temperature:**

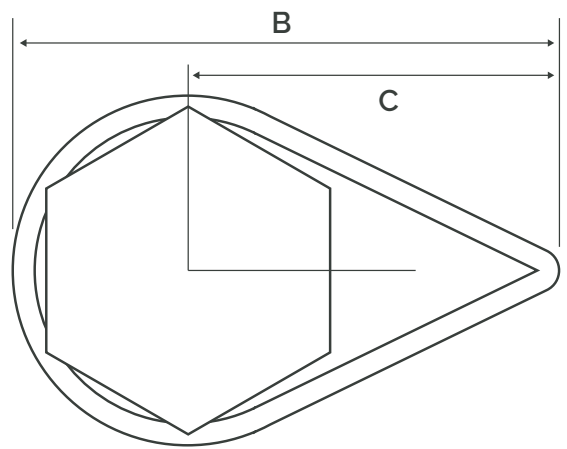
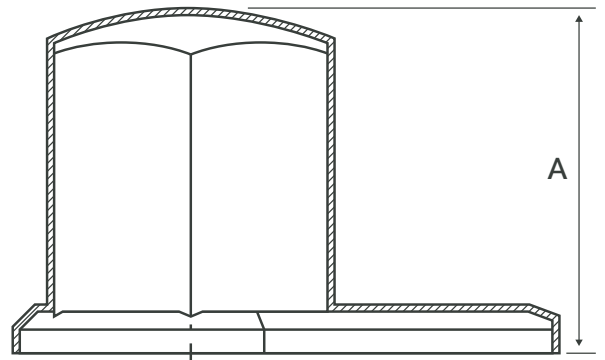
125°C/257°F (standard version).  
 165°C/329°F (HT version).

**Application:** Mainly for commercial vehicles, such as trucks, agricultural vehicles, dangerous goods transporters, etc. It is also used in the industrial sector, and wherever safety critical fastening devices can loosen due to heavy vibrations.

**Main benefits:** Improves the safety of nut fittings. Enables quick and easy visual checks and monitoring. Reduces maintenance costs by saving time and money.

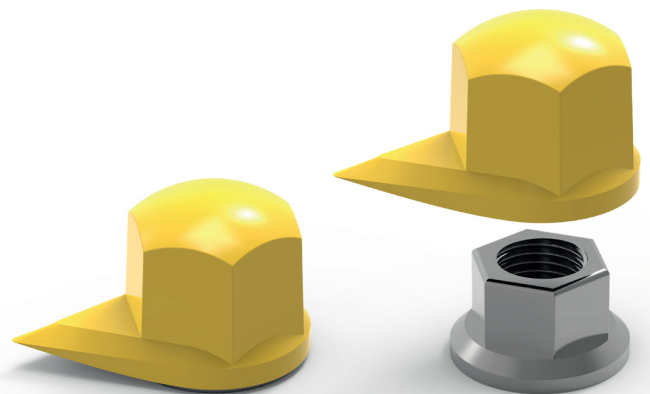
**Sizes:** All sizes are measured across the flat (a/f) of the nut (in mm). Available in sizes as shown on the front page.

**Colour:** Other colours are available subject to quantity.



**Specifications**

- A = 44 mm
- B = 75 mm
- C = 50 mm



SPECIFICATIONS ARE VALID FOR ALL COLOURS IN THIS SIZE

**GLOBAL LEADERS  
 IN WHEEL SAFETY**

Tel: +44 (0)1524 271 200  
 info@checkpoint-safety.com  
 www.checkpoint-safety.com

**Checkpoint®**  
 THE ORIGINAL AND THE BEST