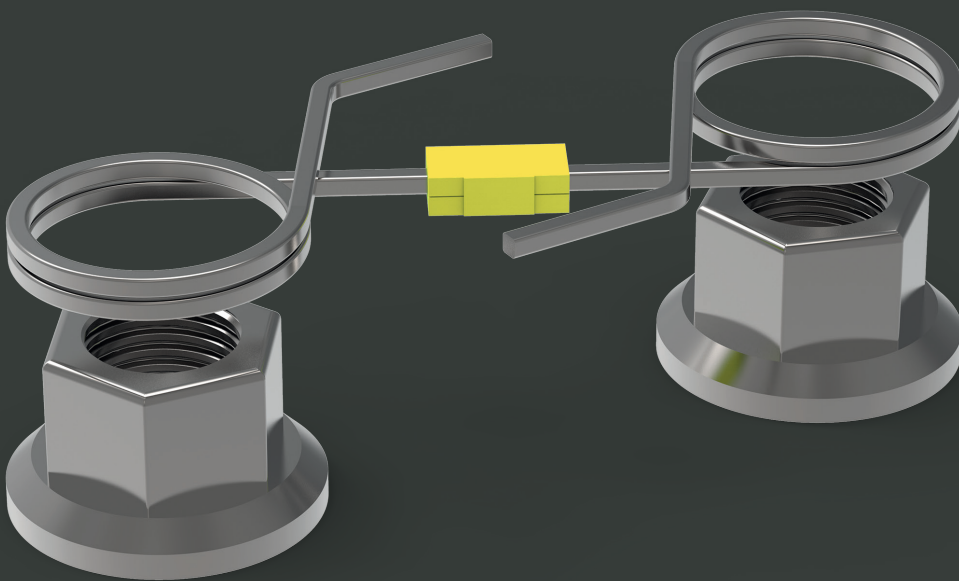


# Checklock SQ<sup>®</sup>

Checklock SQ<sup>®</sup> is a retainer with a coil-like structure, which is placed on two adjacent wheel nuts.



For sizes  
please refer  
to the CLSQ  
insert

# Checklock SQ®

**Product:** Checklock SQ®

**Product Code:** CLSQ

**Function:** The Checklock SQ® provides a retaining function which helps prevent loosening of the wheel nuts. It comprises of two coils, when pushed together they widen to sit around adjacent nuts. Releasing the coils causes them to tighten and retain the wheel nuts from loosening.

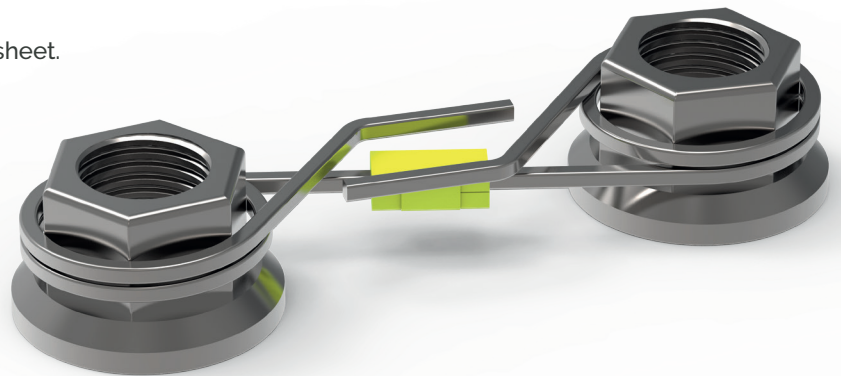
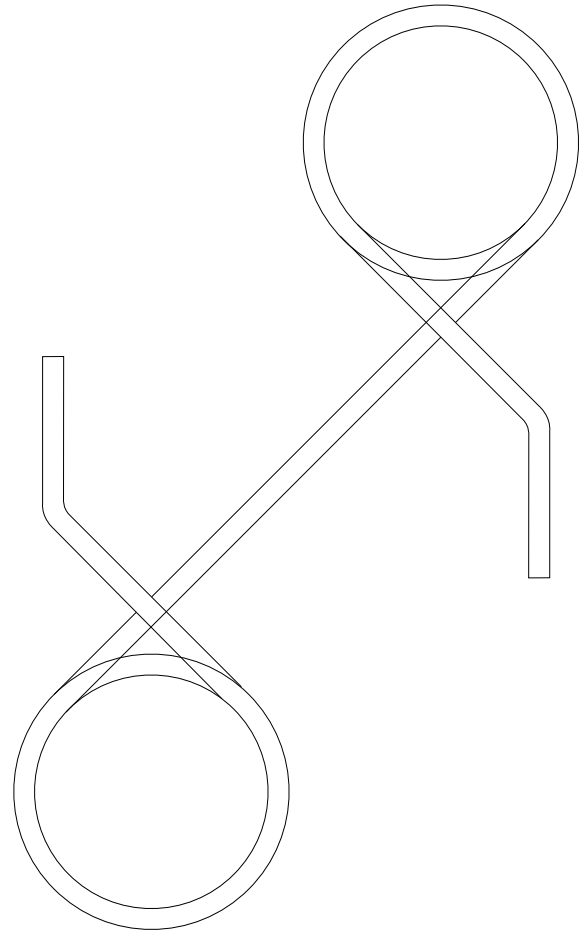
**Material:** High quality premium stainless steel manufactured in square section.

**Application:** Mainly for commercial vehicles such as buses, trucks, dangerous goods transporters, etc. It is also used in the industrial and mining sector, and wherever safety critical fasteners can loosen due to heavy vibrations and need retaining function.

We can design and manufacture custom solutions for a wide range of other applications.

**Main benefits:** Improves the safety of nut fittings. Enables quick and easy visual checks and monitoring. Reduces maintenance costs by saving time and money. Helps retain wheel nuts in place. Does not require special tools for fitting.

**Sizes:** For the size guide please see separate sheet.



**GLOBAL LEADERS  
IN WHEEL SAFETY**

Tel: +44 (0)1524 271 200  
info@checkpoint-safety.com  
www.checkpoint-safety.com

**Checkpoint®**  
THE ORIGINAL AND THE BEST