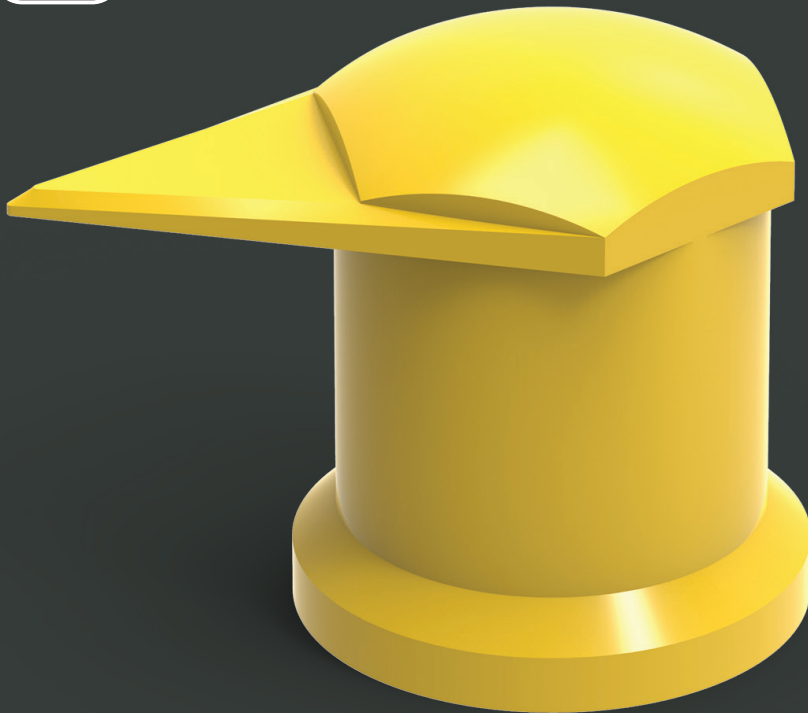


Dustite LR[®]

Dustite LR[®] is a loose wheel nut indicator and protective cap, which also provides an overheating indication. The LR version is designed for wheels with trims.



AVAILABLE

| Colour | Size (mm) |
|---------------|-----------|
| Fluoro Yellow | 17 |
| | 18 |
| Red | 19 |
| | 20 |
| | 21 |
| Solid Yellow | 22 |
| | 23 |
| | 24 |
| Green | 25 |
| | 26 |
| | 27 |
| Orange | 28 |
| | 29 |
| | 30 |
| Blue | 31 |
| | 32 |
| | 33 |
| Olive Grey | 34 |
| | 35 |
| | 36 |
| Black | 37 |
| | 38 |
| | 39 |
| Silver Grey | 40 |
| | 41 |
| | 42 |
| White | 43 |
| | 44 |
| | 45 |
| | 46 |
| | 47 |
| | 48 |
| | 49 |
| | 50 |

Dustite LR[®]

Product: Dustite LR[®] Yellow 30mm
Product Code: DTLRY30

Function: The Dustite LR[®] combines a loose wheel nut indicator and a protective cap, to indicate movement of the wheel nuts and to protect them from external elements such as water, dirt, road salts and rust. The Dustite LR[®] will also melt to indicate any overheating issues. This version is designed specifically for use on wheels with trims or step rings.

Material: We use high-grade virgin polymer to ensure product quality and reliability as an overheating indicator.

Melt temperature:

125°C/257°F (standard version).

165°C/329°F (HT version).

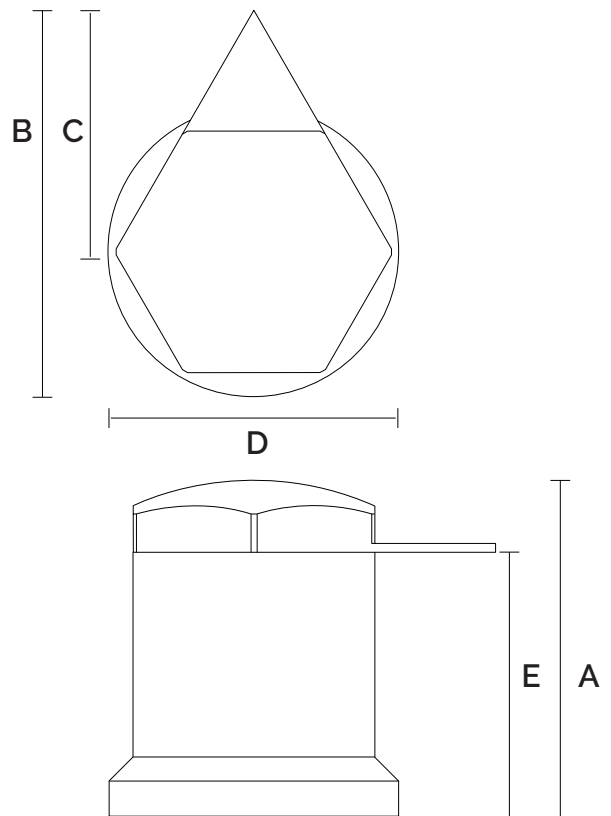
Application: Mainly for commercial vehicles such as trucks, agricultural vehicles, dangerous goods transporters, etc. It is also used in the industrial sector, and wherever safety critical fasteners can loosen due to heavy vibrations.

Main benefits: Improves the safety of nut fittings. Enables quick and easy visual checks and monitoring. Reduces maintenance costs by saving time and money.

Sizes: All sizes are measured across the flat (a/f) of the nut (in mm). Available in sizes as shown on the front page.

Colour: Other colours are available subject to quantity.

Bespoke barrel length : We can also offer shortening of the barrel length subject to size and availability (usual lead time 2-3 weeks depending on demand).



Specifications

- A = 58 mm
- B = 69 mm
- C = 50 mm
- D = 49 mm
- E = 44 mm



SPECIFICATIONS ARE VALID FOR ALL COLOURS IN THIS SIZE

**GLOBAL LEADERS
 IN WHEEL SAFETY**

Tel: +44 (0)1524 271 200
 info@checkpoint-safety.com
 www.checkpoint-safety.com

Checkpoint[®]
 THE ORIGINAL AND THE BEST